



# RELAUNCH GUIDE

## 2020/2021

Planting SEEDS for Life



## Dear Greentree Families;

This year promises to be another extraordinary school year. This document reflects our dedication to the best practices to keep our students, your children, safe. It is based on Golden Hills' guidelines. As we learn how best to deal with the spread of COVID-19, things will continue to change. Please return here often to find the answers to your questions.

We will continue to take direction from Golden Hills School Division, the Chief Medical Officer for Alberta Health, and the Education Minister who have advised that we need to be prepared to shift between any one of three scenarios as the year progresses. This document outlines what families can expect if Greentree is directed to implement any of the scenarios.


On Tuesday, September 1<sup>st</sup>, we will welcome our students back into our school. To help with the adjusting to any changes, the school will run on a staggered entry with about half the students on alternating days for the first six days. This was outlined in the Back to School Planning Aug 2020 letter to parents.

We will work hard, as we always do, to keep Greentree School a safe, caring, and welcoming place for our families. The virus interferes with how we would normally greet the members of our community. But it will not change how we treat you. Please know we understand your concerns for your health, your child's health, and the health of our school staff. We know you will work with us to make sure we keep everyone as safe as we can.

Please reach out if you have any questions or concerns by contacting a member of the administration team: Shelley Friesen or Dana Alsafi at the school 403-823-5244 or via email [shelley.friesen@ghsd75.ca](mailto:shelley.friesen@ghsd75.ca) or [dana.alsafi@ghsd75.ca](mailto:dana.alsafi@ghsd75.ca)

Shelley Friesen  
Greentree School Principal

Dana Alsafi  
Greentree School Associate Principal



**GREENTREE  
SCHOOL**

**HEALTH AND  
SAFETY  
GUIDE**

**2020/2021**

Planting SEEDS for Life

## TABLE OF CONTENTS

### Table of Contents

OVERVIEW .....	5
Covid-19 and Children/Youth .....	6
Transmission .....	6
COVID-19 and Adults .....	7
GENERAL INFECTION PREVENTION AND EXPOSURE CONTROL MEASURES.....	8
Public Health Measures .....	11
<i>Mass Gatherings</i> .....	<b>11</b>
<i>Case Finding, Contact Tracing and Outbreak Management</i> .....	<b>11</b>
<i>Self-Isolation and Testing</i> .....	<b>11</b>
Environmental Measures .....	13
<i>Cleaning and disinfecting</i> .....	<b>13</b>
Administrative Measures .....	13
<i>Physical distancing and minimizing physical contact</i> .....	<b>13</b>
<i>Student Transportation on Busses</i> .....	<b>14</b>
Personal Measures .....	15
<i>Stay home when sick</i> .....	<b>15</b>
Personal Protective Equipment .....	15
Specific Covid-19 Risk Mitigation.....	16

# OVERVIEW

Procedures outlined within this document are intended to prepare Greentree families for a successful re-entry into school. It presents specific strategies that will be implemented so each member of our community will know what can be expected.

We are excited to have our students back to their classrooms and making the connections that are so important to us all. At the same time, we will prioritize keeping them safe by reducing the opportunities of transmission of COVID-19. These guiding principles help us provide educational environments that are beneficial to learning, while maintaining the safety and security for students, teachers, and staff.

## **Principles to guide decisions, preparations and actions:**

- Ensure the health, safety and well-being of students, teachers, staff and all workers by providing safe and healthy teaching and learning environments and counselling services, to ensure their wellbeing including mental health.
- Keep informed of all protocols and requirements established by Alberta Health Services and the Medical Officer of Health and ensure they are adhered to.
- Take into consideration that some teachers, administrators, school staff and students may fall into the at-risk category because of their age or other health risks and provide reasonable accommodations for them when possible.
- Differentiate instruction strategies to ensure students have access to high quality learning opportunities that are guided by Alberta Education mandates and the Programs of Study for all potential methods of delivery.
- Support professional development by ensuring staff have access to professional learning, collaboration, and the support they need to grow their instructional practice in all potential methods of delivery.

There are three scenarios that we need to be prepared to move between:

- Scenario 1* In-school classes resume (near normal with health measures).
- Scenario 2* In-school classes partially resume (with additional health measures).
- Scenario 3* At-home learning continues (in-school classes are suspended/cancelled).

We have been given direction from the Ministry of Education to proceed with Scenario 1 this September.

We can reduce the spread of the virus if we all implement the following public health and infection prevention and control measures as often as possible:

- Staying home when ill
- Physical distancing
- Minimized physical contact
- Practicing hand hygiene
- Frequent cleaning and disinfection
- Ongoing screening
- Maintaining student/staff cohorts

## *Covid-19 and Children/Youth*

To date, COVID-19 has been found to have a very low infection rate in children and youth. Children under 1 year of age and those who are immunocompromised or have pre-existing pulmonary conditions are at a higher risk of severe illness. **It is important that parents inform the school about all pre-existing conditions their child may have.**

Children and youth typically have much milder symptoms of COVID-19 and most often show low-grade fever and a dry cough. GI symptoms are more common over the course of the disease, while skin changes and lesions are less common.

## *Transmission*

Children are not the primary drivers of COVID-19 spread in schools or in community settings. Evidence indicates transmission involving children is mainly limited to household settings where COVID-19 positive adults have transmitted to children in that household. Clusters and outbreaks involving children and youth are unusual and tend only to occur in areas where there are high levels of community spread.

Adolescent children will practice physical distancing where possible when outside of their home. Because it's more difficult for younger children to maintain physical distancing, it's more realistic to concentrate on having them minimize their physical contact with others instead.

## COVID-19 and Adults

Based on currently available information and clinical expertise, adults at a higher risk for severe illness are:

- Aged 65 and over especially if they are living in a nursing home or long-term care facility,
- People of any age with compromised immune systems, or
- People of any age who have serious underlying medical conditions.

Most adults infected with COVID-19 will have mild symptoms that do not require care outside of the home.

COVID-19 is most commonly transmitted through large droplets produced when a person infected with COVID-19 coughs or sneezes. The virus in these droplets can enter through the eyes, nose or mouth of another person if they are in close contact with the person who coughed or sneezed. The virus can also enter a person's body from touching something with the virus on it and then touching one's eyes, mouth or nose with unwashed hands. **Proper hand hygiene prevents the spread of COVID-19.**



**Wet your hands** with clean, running water (warm or cold), turn off the tap and apply soap.



**Lather your hands** by rubbing them together with the soap. Lather the backs of your hands, between your fingers, and under your nails.



**Scrub your hands** for at least 20 seconds. Need a timer? Hum the "Happy Birthday" song from beginning to end twice.



**Rinse your hands** well under clean, running water.

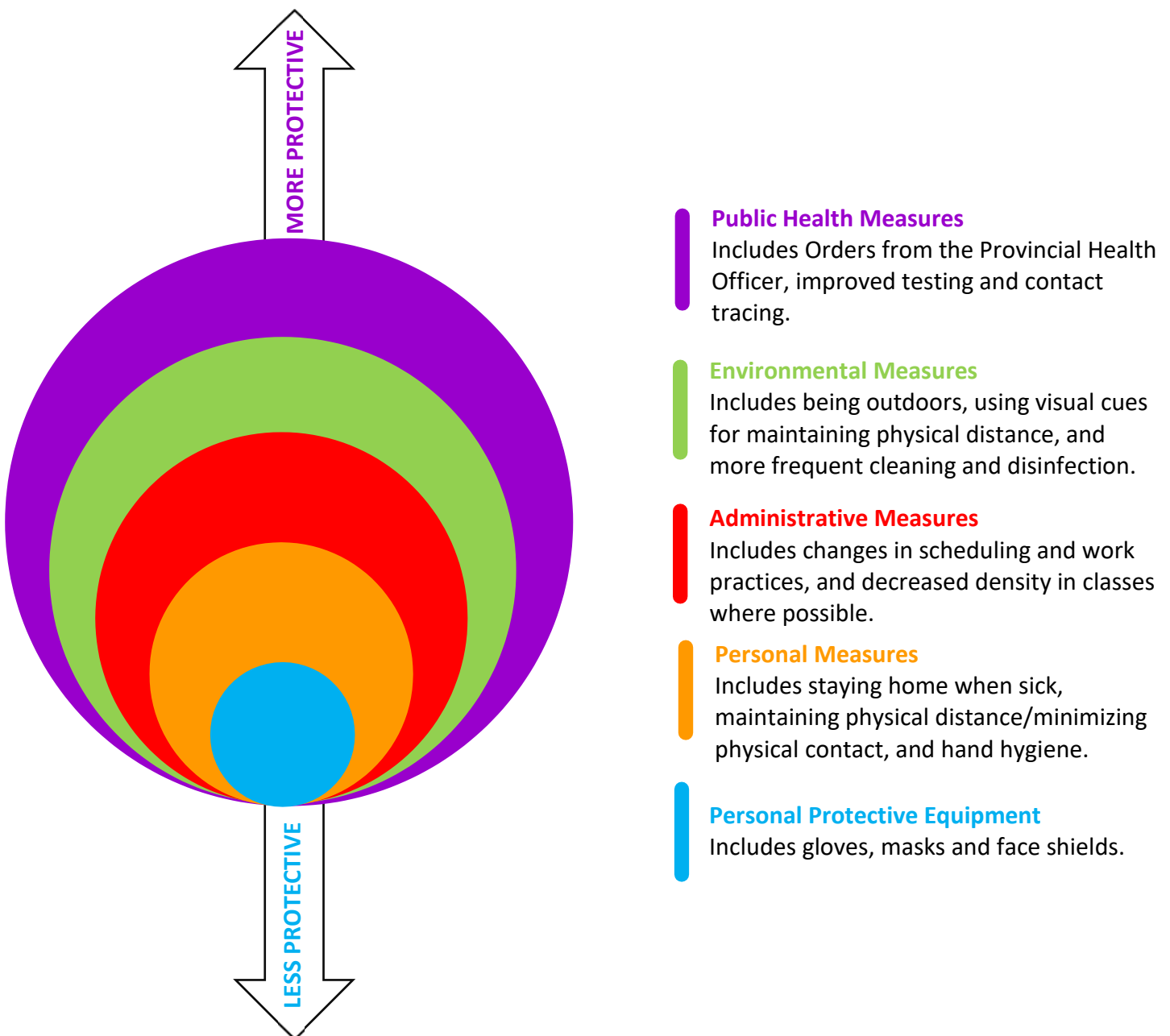


**Dry your hands** using a clean towel or air dry them.




# GENERAL INFECTION PREVENTION AND EXPOSURE CONTROL MEASURES



Implementing infection prevention and exposure control measures helps create a safe environment for everyone. A hierarchy of the measures that can be taken to reduce the transmission of COVID-19 is diagramed below. Greentree’s plan to implement a combination of measures at each level is provided in a chart following this diagram.

## Hierarchy for Infection Prevention and Exposure Control Measures for Communicable Disease





 <p><b>Public Health Measures</b></p>	<p><b>Public Health Measures</b> are actions taken across society at the provincial level to limit the spread of the SARS-CoV-2 virus and reduce the impact of COVID-19. The Provincial Health Officer has implemented public health measures including limits on mass gatherings, requiring travelers to self-isolate or quarantine upon arrival in Alberta, effective case finding and contact tracing, and emphasizing the need for people to stay home when they are sick.</p>
<p><b>Families are asked to review a questionnaire with all students prior to sending them to school. Also, all visitors and staff will conduct the same review of the questionnaire prior to entering the school. Anyone with symptoms are asked to complete the online self-assessment tool to determine next steps.</b></p>	
 <p><b>Environmental Measures</b></p>	<p><b>Environmental Measures</b> are changes to your physical environment that reduce the risk of exposure. Examples include being in outdoor spaces, ensuring good ventilation and air exchange, using visual cues to maintain physical distance, erecting physical barriers where appropriate and frequent cleaning and disinfection.</p>
<p><b>Greentree School will have a caretaker on site throughout the day cleaning all high-touch surfaces. Classrooms will have cleaning supplies and teachers will direct students to help clean surfaces within the room throughout the day.</b></p>	
 <p><b>Administrative Measures</b></p>	<p><b>Administrative Measures</b> are measures enabled through the implementation of policies, procedures, training and education. Examples of these include health and wellness policies, limits to numbers in classrooms (where possible), staggered schedules and using virtual meetings.</p>
<p><b>Greentree School classrooms will be arranged to allow students to not face each other while sitting as far apart as possible. Hallway and school entry use will be scheduled by cohorts. Width of Greentree hallways allow for near-regulation social distancing for the rare occurrence of two-way traffic. Shared items will be kept to a minimum and cleaned between uses. Separate recesses and scheduled bathroom times will be implemented.</b></p>	

 <p style="text-align: center;"><b>Personal Measures</b></p>	<p><b>Personal Measures</b> are actions individuals can take to protect themselves and others. Examples include maintaining physical distance/minimizing physical contact, washing your hands frequently, coughing into your elbow and staying home from work if you are sick.</p>
<p><b>Students will be shown the proper hand hygiene, coughing protocol, and social distancing measures in age-appropriate ways. They will be reminded of proper procedures often. A balance of mental health, academic, and physical safety will be the focus of staff working with students. At all times, the age and cognitive abilities of students will be considered. Additionally, posters will be placed throughout the school in order to help remind everyone about best practices.</b></p>	
 <p style="text-align: center;"><b>Personal Protective Equipment</b></p>	<p><b>Personal Protective Equipment</b> is the last and least effective of the infection prevention and exposure control measures and will only be considered after exploring all other measures. PPE is not effective as a stand-alone preventive measure, will be sited to the task, and must be worn and disposed of properly. Outside of the health care settings, the effectiveness of PPE is generally limited to protecting others should you be infected.</p>
<p><b>Alberta’s Chief Medical Officer and the Minister of Education have mandated face masks to be worn by all staff and students in grades 4 – 6 when in common areas such as hallways and busses. The use of face masks in other circumstances will depend upon the learning activity/environment. Teachers will have plexiglass barriers to use at their desk. Staff will have face shields that they may use. Gloves will be available to use when necessary.</b></p>	



## Mass Gatherings

The Provincial Health Officer's Order for mass gatherings continues to prohibit gatherings and events of people in excess of 50 people inside and 200 people outside; however, this Order does not apply to regular school activities. It is unlikely students and staff will be in groups of 50 people.

**At Greentree, groups gathering inside will be within these regulations at most times. In a rare instance where more than 50 people will be near each other (such as when one group prepares to leave the library while another enters), students will be instructed to limit contact by maintaining distance and limit time spent in the vicinity of other cohorts. It is expected through scheduling when cohorts will be using shared spaces that these interactions will rarely occur.**

## Case Finding, Contact Tracing and Outbreak Management

Active testing of people with mild COVID-19 like symptoms (case finding) helps identify cases early in the course of a person's illness, determine whether others in close contact with them are at risk for infection (contact tracing), and ensure they get appropriate care and follow-up.

**If two or more staff/students within a cohort are identified as having symptoms consistent with COVID-19, the school will follow outbreak notification procedures as per routine zone protocols. At Greentree, a member of the admin team will contact the local health officer to determine current procedures. Golden Hills' Human Resources will be notified of any confirmed case at the school. A deep cleaning of the space will occur.**

## Self-Isolation and Testing

If children or staff have COVID-19 like symptoms they will self-isolate, take the COVID-19 Self-Assessment (online tool found through Alberta Health) and follow their direction for the next steps. Self-isolation is also advised for anybody who is in close contact of a confirmed case and are waiting to see if they develop COVID-19 illness.

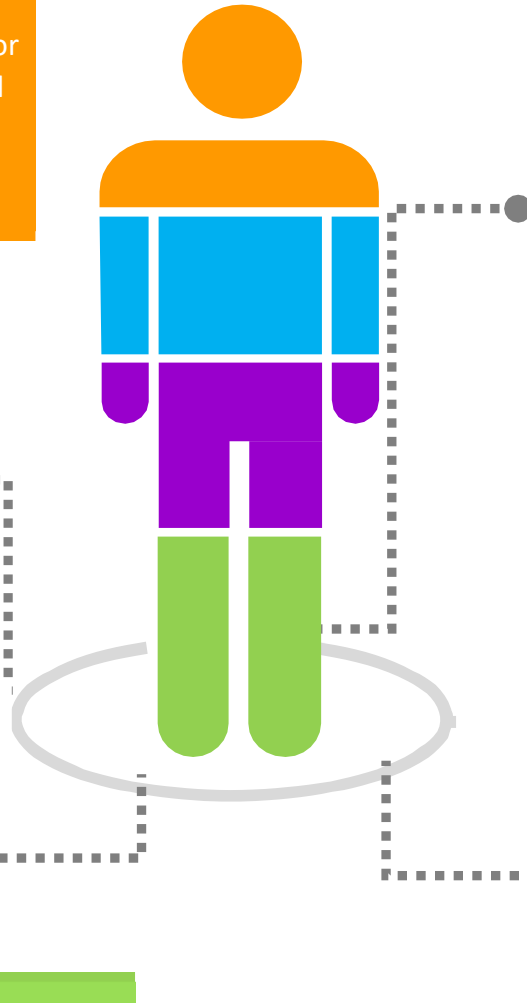
**At Greentree, families are asked to review the questionnaire with children before they come to school. All staff and visitors to the school are also asked to review the questionnaire prior to coming into the school. Anyone who responds YES to any question is asked to take the online assessment tool to determine the next steps.**

**If you have symptoms**

Anyone that reports symptoms will be directed to stay home, seek health care advice as appropriate (e.g. call Health Link 811, or their primary health care practitioner, or 911 for emergency response), and fill out the AHS Online Self-Assessment tool to determine if they will be tested.

**Tested positive for COVID-19**

Children, youth and staff are required to isolate for a minimum of 10 days if they have tested positive for COVID-19. Isolation period is for 10 days from the start of symptoms, or until symptoms resolve, whichever takes longer.



**Have symptoms but tested negative**

If children, youth, or staff tested negative and have known exposure to COVID-19, they are required to isolate for 10 days.

If they tested negative and have no known exposure to the virus, they are not required to isolate. The key is to be tested to confirm that it is not COVID before entering or returning to the school.

**Close contacts of confirmed cases**

Children, youth or staff are required to isolate for 14 days and monitor for symptoms if they are a close contact of a person who tested positive for COVID-19 (provides care, lives with or has close physical contact without appropriate use of personal protective equipment).



## *Environmental Measures*

### **Cleaning and disinfecting**

Regular cleaning and disinfecting are essential to preventing the transmission of COVID-19 from contaminated objects and surfaces. **Greentree will be cleaned and disinfected following these guidelines:**

- **General cleaning and disinfecting of the premises will occur daily. Cleaning staff will be on duty during the day.**
- **Frequently touched surfaces (doorknobs, light switches, toilet handles, tables, desks, chairs, keyboards, microwaves, appliances) will be cleaned and disinfected daily.**
- **There will not be any area rugs or soft furnishings that cannot be easily cleaned and disinfected.**
- **Out of an abundance of caution, shared materials will be limited as much as possible and will be cleaned between uses.**



## *Administrative Measures*

### **Physical distancing and minimizing physical contact**

Physical distancing (maintaining 2 meters between two or more people) is challenging in a Pre-K-6 school setting. Different expectations for different age groups and activities will be implemented. For example, younger students will be helped to understand and maintain minimal physical contact with one another, while older students and adults will make sure they maintain a safe physical distance whenever possible.

**Greentree will implement the following physical distancing strategies:**

- **Avoid close greetings like hugs and handshakes. Regularly remind students to “keep your hands to yourself”.**
- **Arrange classroom and learning environments to allow maximum distance between students and adults.**
- **Students, educational assistants, and teachers will stay together throughout the day in a cohort (specific grade level class, such as 3A).**
- **When one cohort has a different teacher, the teacher will change classrooms; students will remain in one classroom.**
- **Each grade level will have a designated entry and exit:**
  - **Playground door for Kindergarten and Grade 1;**

- Front door for Grades 2 & 4;
  - South door for Grade 3;
  - Gym door for Grade 5;
  - Entry to portables for Grade 6.
- Schedule recesses and snack/lunch breaks to optimize safety measures the social benefits of unstructured play. An example might be:
  - Grades K, 2, 3, and 6 eat when Grades 1, 4, and 5 are at recess
- Appropriate hand hygiene practices will be adhered to before, during, and after outdoor play and eating as well as any time students or staff enter a room.
- Teachers will take students outside as often as possible, weather permitting.
- Teachers will offer learning activities that minimize physical contact and reduce shared items.
- Lockers will be used to store coats and backpacks; items used during the day will be stored in the classroom.
- Boots and outside shoes will be stored on boot tracks by the class-specific entryway.
- Parents, caregivers and other non-staff adults entering the school will complete the Screening Questionnaire and sign in at the office upon entering the school. Diligent hand hygiene and physical distancing will be practiced.
- Assemblies and other school-wide events will be held virtually to avoid large gatherings in one place.

## Student Transportation on Busses

Children and students travel to and from school through a combination of walking, being driven by their parents/guardians, and school bus services. Travel/transportation of children and students must follow public health measures in place.

- Parents and children/students will not be in the pick-up area or enter the bus if they have symptoms of COVID-19.
- The driver will be provided with a protective zone, and will include:
  - 2-meter physical distance;
  - Physical barrier and/or face shields;
  - Non-medical masks.
- Students will be assigned seats and a record of this seating plan will be kept to assist with contact tracing of COVID-19 cases. Students who live in the same household will be seated together.
- Bus Drivers will implement procedures for student loading, uploading and transfers that support physical distancing of 2 meters between all persons (except household members).

- Busses will run on a staggered schedule.
- Increase frequency of bus cleaning and records of cleaning will be kept by each driver.



## *Personal Measures*

### **Stay home when sick**

- All students and staff who have symptoms of COVID-19 **OR** travelled outside Canada in the last 14 days **OR** were identified as a close contact of a confirmed case or outbreak must stay home and self-isolate, including children of essential service workers who are ill.
- Parents and guardians will complete the Screening Questionnaire for each student under their care before sending them to school.
- School staff must assess themselves daily for using the Screening Questionnaire.
- Students who become sick while at school will be removed from the learning environment, masked and isolated in the infirmary room as discreetly as possible. Parents and guardians will be notified immediately and expected to pick up the student within the hour.
- Staff who become sick while at school will wear a mask, isolate themselves and leave the school immediately. Principal or Associate Principal will supervise classes until an appropriate substitute can be secured.



## *Personal Protective Equipment*

Personal Protective Equipment (PPE) used by staff for the hazards normally encountered in their regular course of work will continue to be used.

**At Greentree, PPE will be used to ensure safety of all members of our community. All staff and students in grades 4 to 6 have been mandated to wear masks while in common-use areas. Use of PPE may occur at other times if the learning activity warrants it. Any teacher, student, or staff may choose to use PPE (such as masks, gloves, or face shields) to protect themselves and others as they determine appropriate.**

# Specific Covid-19 Risk Mitigation

<p style="text-align: center;"><b>General Building Safety</b></p>	<ul style="list-style-type: none"> <li>• A thorough cleaning of the school has been completed over the summer.</li> <li>• Area rugs and soft furnishings that cannot be easily cleaned and disinfected have been removed.</li> <li>• Greentree’s procedures for hand hygiene and cleaning requirements:             <ul style="list-style-type: none"> <li>○ Placement of hand sanitizer containing at least 60% alcohol content by school and classroom entrances.</li> <li>○ Cleaning staff will be onsite to regularly clean high-contact surfaces and common areas.</li> <li>○ Shared equipment will be avoided whenever possible and cleaned between uses otherwise</li> </ul> </li> <li>• Students and staff are required to perform hand hygiene when entering and exiting the school and the classroom.</li> <li>• Proper hand hygiene and respiratory etiquette will be promoted.</li> <li>• Water fountains will remain open, but students will be encouraged to fill water bottles rather than use the mouthpiece of the fountain.</li> <li>• Water fountain knobs and buttons will be cleaned regularly as they are high-touch surfaces.</li> <li>• Posters promoting proper hand hygiene will be placed throughout the school.</li> </ul>
<p style="text-align: center;"><b>Screening</b></p>	<ul style="list-style-type: none"> <li>• All persons who will access the school will self-screen for symptoms each day before entering the school.             <ul style="list-style-type: none"> <li>▪ Parents and students will be provided a copy of the screening tool.</li> <li>▪ Posters of the screening tool will be posted near the entry of the school, in the foyer and on the wall outside the office.</li> </ul> </li> <li>• Greentree office staff must be notified of and will record any student’s pre-existing condition. Any COVID-19 symptoms (even if shared with a known pre-existing condition) will require a COVID-19 test to confirm that it is not the source of their symptoms before attending school.</li> <li>• Anyone that reports symptoms will be directed to stay home and seek appropriate health care advice to determine next steps (isolate or be tested).</li> </ul>
<p style="text-align: center;"><b>Cohorts</b></p>	<ul style="list-style-type: none"> <li>• Students will be assigned cohorts according to their homeroom (KA, KB, KC, 1A, 1B, 1C, 2A, 2B, 3A, 3B, 4A, 4B, 5A, 5B, 6A, and 6B)</li> <li>• Students will remain in their cohort and distanced from other cohorts to the greatest extent possible.</li> </ul>



<p><b>Physical Distancing and Mitigations for High-Traffic Areas</b></p>	<ul style="list-style-type: none"> <li>• Cohorts will be distanced from each other to the greatest extent possible.</li> <li>• Hallways will be used by individual cohorts according to schedules as much as possible and the entire width will be utilized for maximum separation otherwise.</li> <li>• Cohorts will use assigned doors and stairways to enter and exit the school.</li> </ul>
<p><b>Expectations for drop off/entry areas</b></p>	<ul style="list-style-type: none"> <li>• Student drop-off areas will support physical distancing of two meters between all persons (except household members).</li> <li>• Bus drop-off times will be staggered.</li> <li>• Students will be dismissed by bus in a staggered pattern.</li> <li>• Students not on busses will be dismissed after busses are loaded.</li> <li>• Classes have designated entrance and exit doors.</li> <li>• Lunch/snack breaks and recesses will be staggered.</li> </ul>
<p><b>Expectations for visitors and other service providers entering the school</b></p>	<ul style="list-style-type: none"> <li>• Any member of the public entering the school must: <ul style="list-style-type: none"> <li>○ use the self-screening tool posted before entering the school.</li> <li>○ Individuals who answer YES to any of the questions must not enter the school.</li> </ul> </li> <li>• A record of all visitors will be kept.</li> <li>• Visitors sign in at the office</li> </ul>
<p><b>Learning Environments</b></p>	<ul style="list-style-type: none"> <li>• Students are physically distanced and not facing each other whenever possible</li> <li>• Students are taken outside for lessons whenever possible</li> <li>• Students alter eating and recess times to limit hallway traffic and bathroom and playground use</li> <li>• Sharing materials will be limited as much as possible</li> <li>• No off-school trips involving mass transit will take place at this time</li> <li>• Academies, buddy classes, clubs, and other grouped class events will be postponed</li> <li>• Singing, cheering, and wind instruments will not be included in instruction</li> </ul>
<p><b>Auxiliary Spaces</b></p>	<ul style="list-style-type: none"> <li>• Greentree's gymnasium will be used for Physical Education classes. <ul style="list-style-type: none"> <li>○ Classes will be outside when weather permits</li> </ul> </li> <li>• Shared equipment will be avoided as much as possible and cleaned between uses when used</li> <li>• Assemblies will occur in virtual environments</li> </ul>

## Breakfast and Lunch Programs

- **Breakfast program (if continued) will be served to students by an adult who has followed appropriate hand hygiene. Items will be delivered to classrooms**
- **Lunch program will continue to be pre-packaged food but will not include items that require microwave heating**
- **No shared utensils or common items (condiments) will be used**

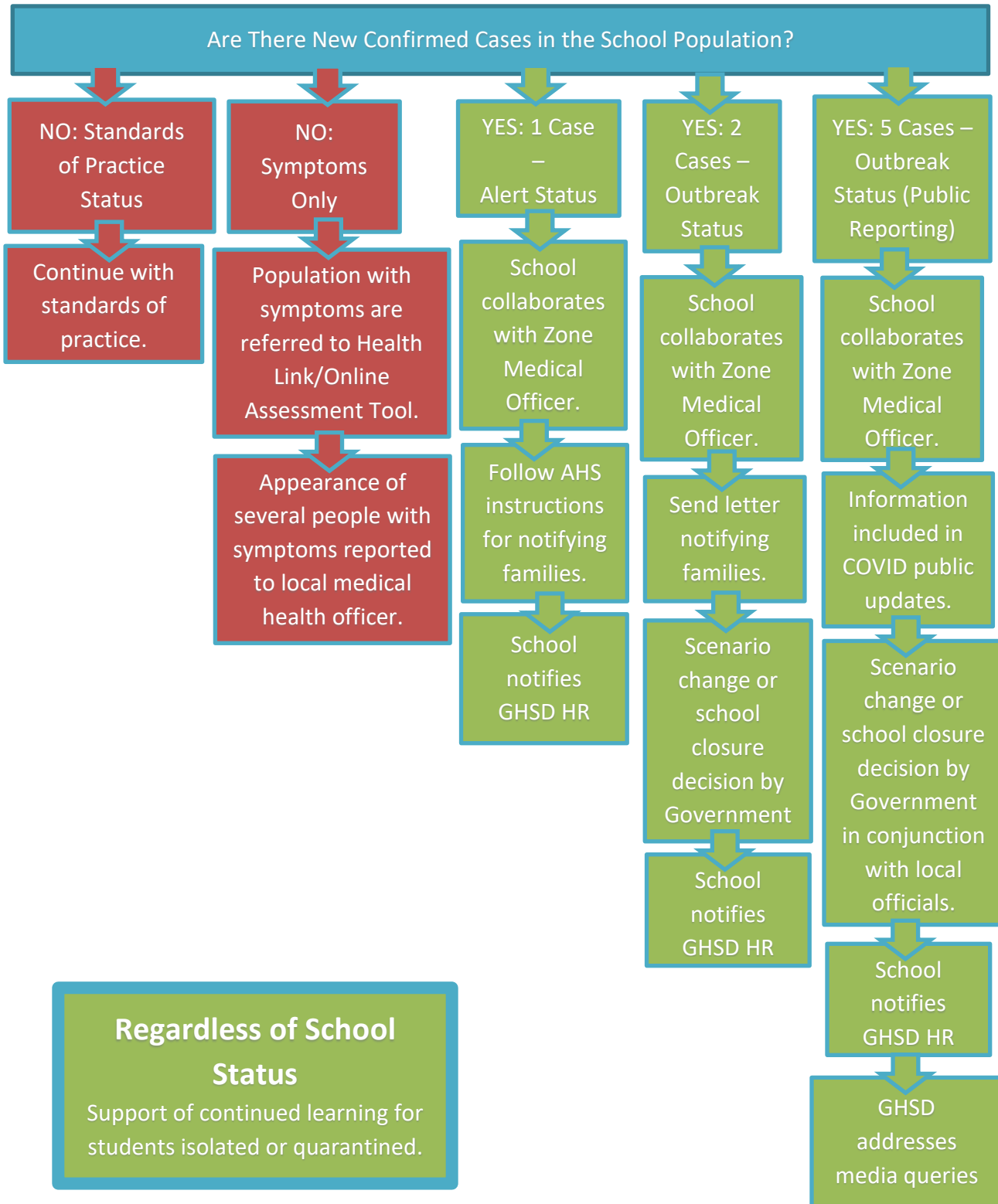
## Responding to Illness

- No one can enter the school if they have COVID-19 symptoms
- Staff who develop symptoms at school will notify the office, put on a mask, and leave the school immediately. Admin will replace the teacher until a suitable substitute can be secured.
  - The staff member will take the online self-assessment tool to determine the next steps
- Students who develop symptoms at school will be treated as discretely as possible. They will be removed from class, placed in the infirmary room off the office, their temperature taken and masked. The emergency contact will be notified and expected to arrive at the school within an hour.
- All items student or staff who develop symptoms at school are in contact with will be cleaned and disinfected as soon as possible.
- If either a student or staff are diagnosed with COVID-19 any room they were in will be deep cleaned immediately.
  - Local medical health officer will be notified and consulted for next steps (notifications, cleaning, school closure)
  - Golden Hills' Associate Superintendent in charge of HR will be notified
- Students or staff with pre-existing conditions that mimic COVID-19 symptoms will be asked to take a COVID test to confirm the symptom's source. If a negative result occurs, and the symptom does not change or new symptoms occur, the person will be able to attend school.
- Past practices for reporting to the local public health unit will be followed (ie. 10% absent rate due to illness or unusual number of individuals with similar symptoms) to help track the spread of illnesses other than COVID

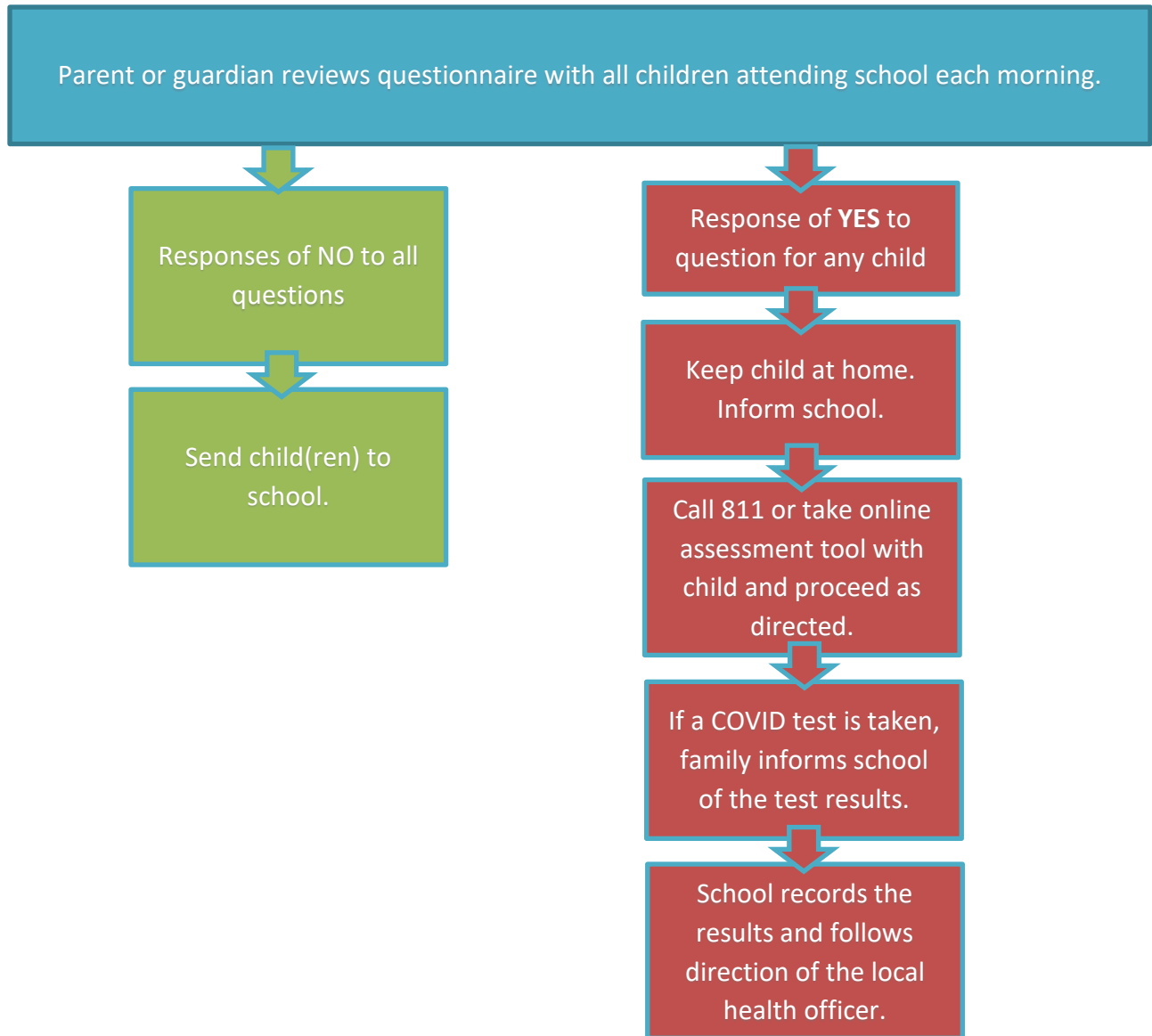
## Transportation

- Parents and children/students should not be in the pick-up area or enter the bus if they have symptoms of COVID-19.
- Students will be assigned seats (recorded by driver). Students in the same household will be seated together.
- Student unloading will be staggered by bus
- Student loading will be staggered by cohort
- Students will wear masks while being transported
- Students who develop symptoms while on the bus will be treated in a similar manner as those developing symptoms at school (see above)
- Busses will be cleaned before each run (driver will document)

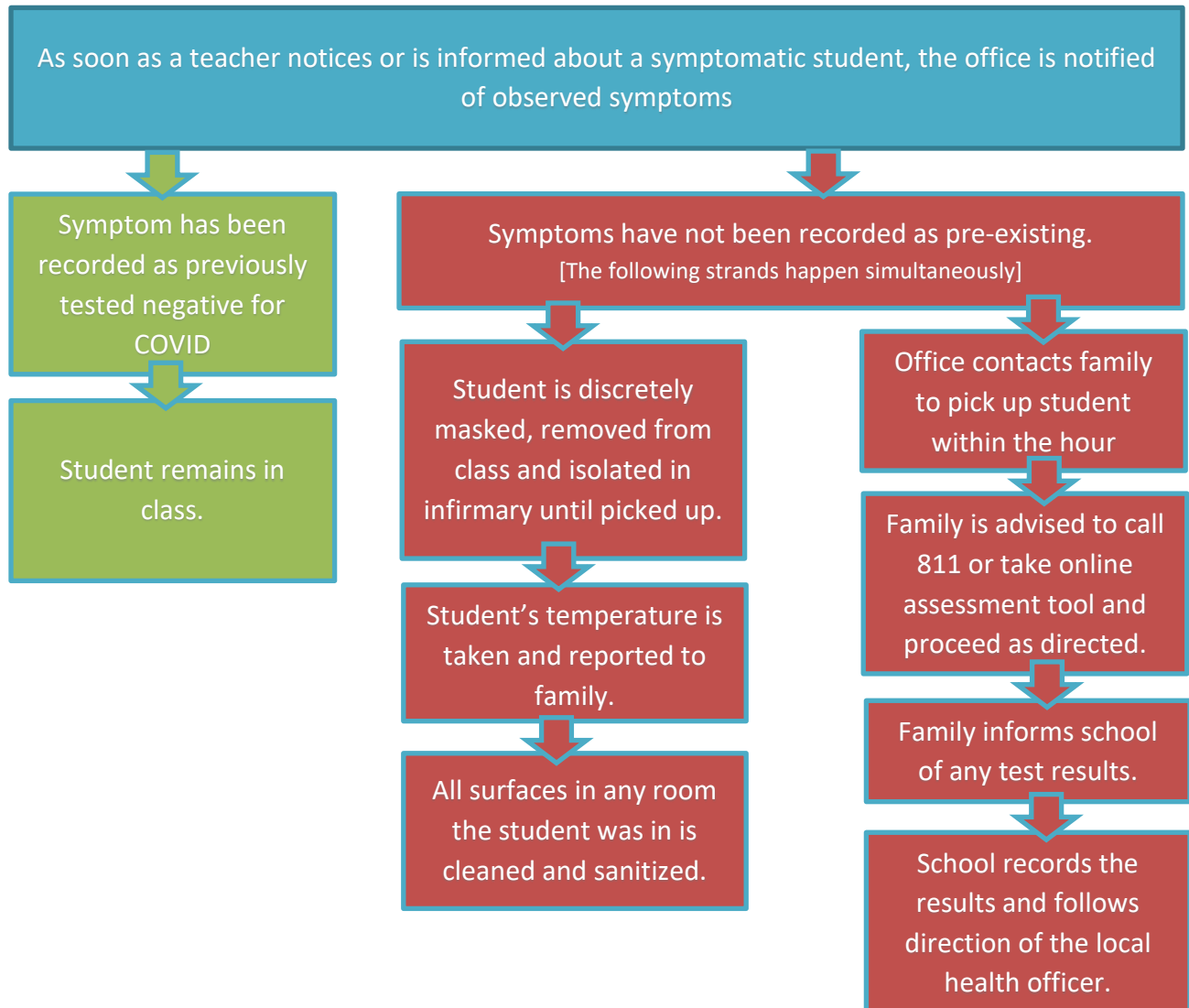
## Procedure According to School Status



## Student Developing Symptoms at Home Procedure:



## Student Developing Symptoms at School Procedure:





# School Screening Questionnaire



All visitors must respond to these questions before entering the school

1.	Do you or your child have any of the following symptoms	Circle One	
	• Fever	YES	NO
	• Cough	YES	NO
	• Shortness of breath/difficulty breathing	YES	NO
	• Sore throat	YES	NO
	• Chills	YES	NO
	• Painful swallowing	YES	NO
	• Runny nose/nasal congestion	YES	NO
	• Feeling unwell/fatigued	YES	NO
	• Nausea/vomiting/diarrhea	YES	NO
	• Unexplained loss of appetite	YES	NO
	• Loss of sense or taste or smell	YES	NO
	• Muscle/joint aches	YES	NO
	• Headache	YES	NO
	• Conjunctivitis (Pink Eye)	YES	NO
2.	Have you travelled outside of Canada in the last 14 days?	YES	NO
3.	Have you had close contact (face-to-face contact within 2 meters/6 feet) with a confirmed case of COVID-19 in the last 14 days?	YES	NO
4.	Have you had close contact (face-to-face contact within 2 meters/6 feet) with a symptomatic close contact of a confirmed case of COVID-19 in the last 14 days?	YES	NO

\*unprotected means close contact without appropriate personal protective equipment (PPE) with anyone other than a medical professional \*\*

If you have answered YES to **ANY** of the above questions, please **DO NOT enter the school** at this time. Return home and use the COVID-19 Self-Assessment tool available online through Alberta Health Services to seek guidance for your next steps.

If you have answered NO to **ALL** the above questions you MAY enter the school, proceed to the office and sign in.



# Home Screening Questionnaire



**Parent/Guardians must ask students these questions before attending school**

1.	Does the attendee have any new onset (or worsening) of any of the following	Circle One	
		YES	NO
	• Fever	YES	NO
	• Cough	YES	NO
	• Shortness of breath/difficulty breathing	YES	NO
	• Sore throat	YES	NO
	• Chills	YES	NO
	• Painful swallowing	YES	NO
	• Runny nose/nasal congestion	YES	NO
	• Feeling unwell/fatigued	YES	NO
	• Nausea/vomiting/diarrhea	YES	NO
	• Unexplained loss of appetite	YES	NO
	• Loss of sense or taste or smell	YES	NO
	• Muscle/joint aches	YES	NO
	• Headache	YES	NO
	• Conjunctivitis (Pink Eye)	YES	NO
2.	Has the attendee travelled outside of Canada in the last 14 days?	YES	NO
3.	Has the attendee had close contact (face-to-face contact within 2 meters/6 feet) with a confirmed case of COVID-19 in the last 14 days?	YES	NO
4.	Has the attendee had close contact (face-to-face contact within 2 meters/6 feet) with a symptomatic close contact of a confirmed case of COVID-19 in the last 14 days?	YES	NO

\*unprotected means close contact without appropriate personal protective equipment (PPE) \*\*

“ill means someone with COVID-19 symptoms on the list above”

If you have answered YES to **ANY** of the above questions, please **DO NOT send your child(ren) to school** at this time. Keep them home and use the COVID-19 Self-Assessment tool available online through Alberta Health Services to seek guidance for your next steps.

If you have answered NO to **ALL** the above questions you MAY send your child(ren) to school.